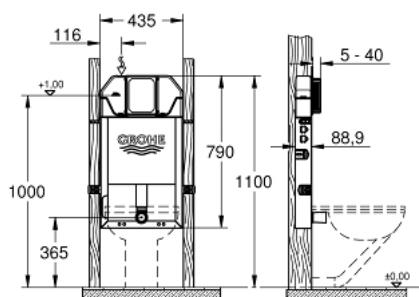


## 39 696 000 **SOLO SLIM FLUSHING CISTERN FOR WC 88.9 MM**



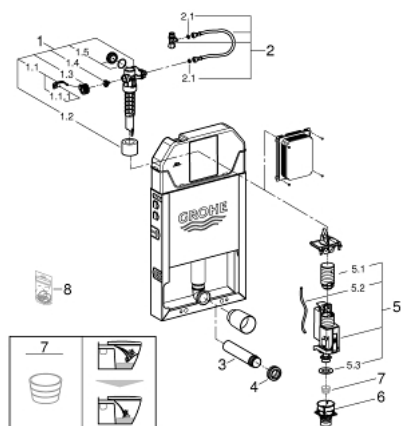
### PRODUCT DESCRIPTION

- cistern volume 6 l
- angle valve ½"
- GROHE Water Saving - Less water, perfect flow
- Shortable inspection shaft incl. protection during construction phase, for vertical use
- for mounting of small flush plates please order revision shaft 40 949 000 (sold separately)
- adjustment ex factory 6l and 3l
- flushing cistern SLIM, 3 - 6 l, containing following features:
- pneumatic discharge valve offering 3 modes of operation: dual flush or start/stop or single flush
- water supply from top
- optional flow manager please order separately
- for on-the-wall installation please order wall brackets 39 699 000 (sold separately)
- flush pipe insulated against condensation
- DR-brass
- approved for Australia



## 39 696 000 SOLO SLIM FLUSHING CISTERN FOR WC 88.9 MM

### SPARE PARTS, February 2019 – now



1: Filling valve (Order-nr. 42598000)

1.1: Lever (Order-nr. 43734000)

1.1.1: Ball seal dia. 9x6.8 mm (Order-nr. 4377000M)

1.2: Valve float, 5 pcs. (Order-nr. 4379100M)

1.3: Valve head (Order-nr. 43536000)

1.4: Membrane (Order-nr. 43758000)

1.5: Screw cap (Order-nr. 43735000)

2: Angle valve 1/2" (Order-nr. 42607000)

2.1: Seat washer (Order-nr. 0319100M)

3: Wall union (Order-nr. 43352000)

4: Connector (Order-nr. 37119000)

5: Dual Flush discharge valve AV1 (Order-nr. 42320000)

5.1: Extension for overflow pipe (Order-nr. 42313000)

5.2: pneumatic hose (Order-nr. 42319000)

5.3: Ball seal dia. 9x6.8 mm (Order-nr. 42310000)

6: Valve seat (Order-nr. 42599000)

7: Flow restrictor (Order-nr. 42300000)\*

8: Repl. kit f. seal (Order-nr. 43722000)\*

\* Optional accessories