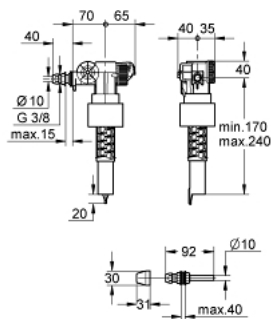


37 092 000 **FILLING VALVE**

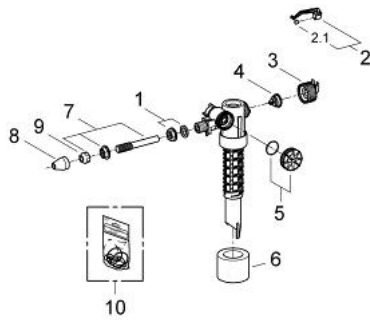


PRODUCT DESCRIPTION

- 3/8"
- universal application
- with adaptor to facilitate installation into an extending narrow cistern
- cap, restrictor
- **) max. shortening 100 mm



37 092 000 FILLING VALVE



SPARE PARTS, September 1995 – now

- 1: Inlet adaptor (Order-nr. 43262000)
- 2: Lever (Order-nr. 43734000)
- 2.1: Ball seal dia. 9x6.8 mm (Order-nr. 4377000M)
- 3: Valve head (Order-nr. 43536000)
- 4: Membrane (Order-nr. 4375800M)
- 5: Screw cap (Order-nr. 43735000)
- 6: Valve float, 5 pcs. (Order-nr. 4379100M)
- 7: Offset compensator (Order-nr. 37124000)
- 8: Escutcheon (Order-nr. 43234SH0)
- 8: Escutcheon (Order-nr. 43234SL0)
- 9: Compression nut (Order-nr. 43258000)
- 10: Repl. kit f. seal (Order-nr. 43722000)*

* Optional accessories