

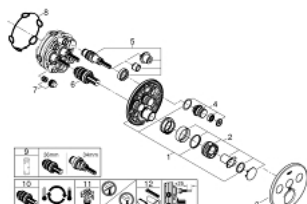
29 138 000 GROHTHERM SMARTCONTROL THERMOSTAT FOR CONCEALED INSTALLATION WITH 3 VALVES



PRODUCT DESCRIPTION

- Colour: chrome
- final installation set for
- GROHE Rapido SmartBox (35 601)
- metal wall escutcheon with GROHE FastFixation (covered escutcheon and shaft sealing, covered fixing), retroactively 6° adjustable
- 10 mm thin profile escutcheon
- GROHE Long-Life finish
- GROHE SmartControl push for ON-OFF, turn for volume adjustment from GROHE Water Saving to Full Flow
- exchangeable symbols
- GROHE TurboStat compact cartridge with wax thermoelement
- GROHE SafeStop safety button at 100°F/38°C
- GROHE SafeStop Plus temperature limiter at 115° F/46° C
- built-in non-return valves and dirt strainers
- multiple outlets can be run simultaneously
- without floor installation plate
- flow performance 9.5 gpm / 1.8 gpm
- optional flow reducer for CALGreen compliance included

29 138 000 GROHTHERM SMARTCONTROL THERMOSTAT FOR CONCEALED INSTALLATION WITH 3 VALVES



SPARE PARTS, September 2016 – now

- 1: Mounting plate (Order-nr. 48362000)
 - 2: Temperature control handle (Order-nr. 49029000)
 - 3: Escutcheon (Order-nr. 49048000)
 - 4: Push button (Order-nr. 48361000)
 - 5: Cartridge (Order-nr. 48359000)
 - 5.1: Spindle (Order-nr. 49088000)
 - 6: Thermostatic compact cartridge 3/4" (Order-nr. 49028000)
 - 7: Non-return valves (Order-nr. 47979000)
 - 8: Ball seal dia. 9x6.8 mm (Order-nr. 48360000)
 - 9: Socket spanner (Order-nr. 49059000)*
 - 10: GROHE TurboStat cartridge 3/4" (Order-nr. 49003000)*
 - 11: Service stops (Order-nr. 1405300M)*
 - 12: Universal extension set single-lever mixers, 25 mm (Order-nr. 14048000)*
- * Optional accessories